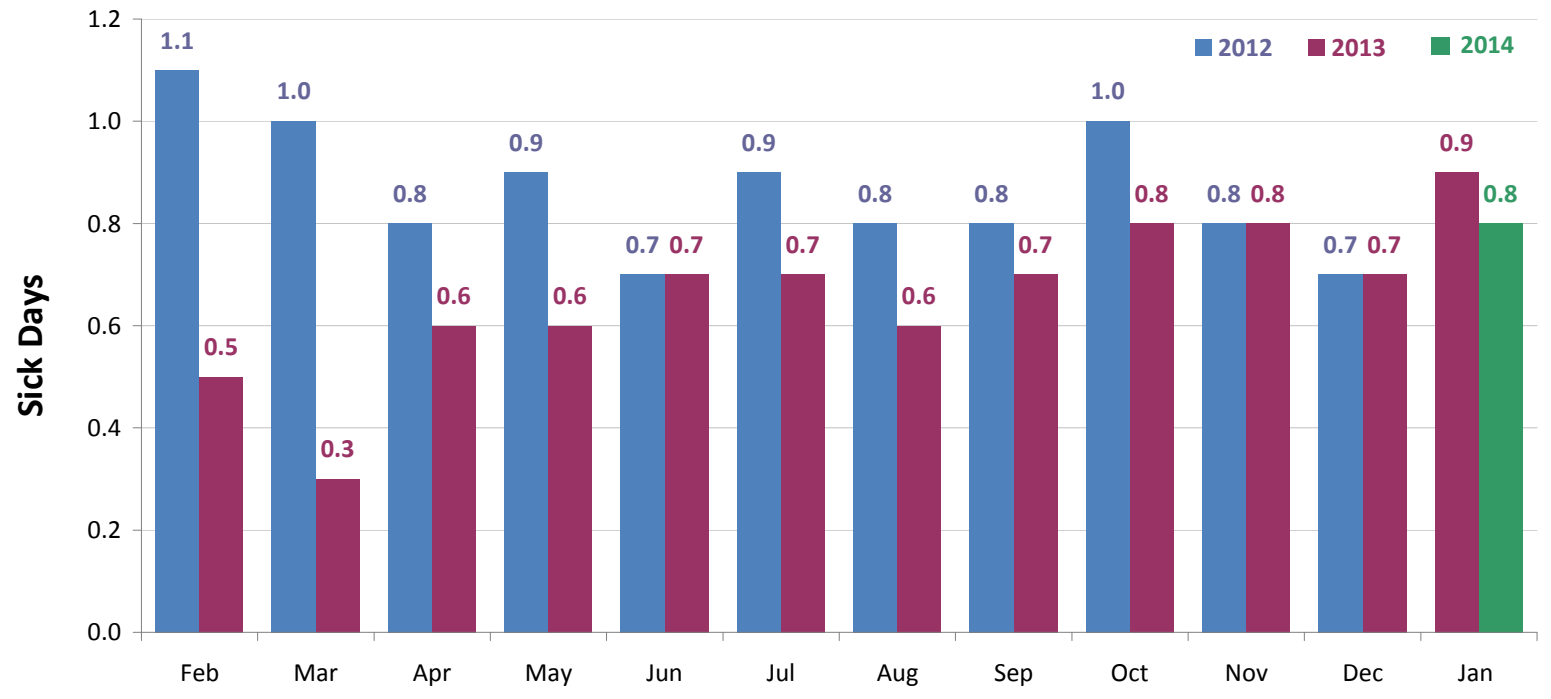


Sick Days per FTE in SBC Feb 2013 to Jan 2014



Number of sick days per fte

SBC		
	2012	2013
Jan	1.1	0.9
Feb	1.1	0.5
Mar	1.0	0.3
Apr	0.8	0.6
May	0.9	0.6
Jun	0.7	0.7
Jul	0.9	0.7
Aug	0.8	0.6
Sep	0.8	0.7
Oct	1.0	0.8
Nov	0.8	0.8
Dec	0.7	0.7

Jan 0.9 0.8

CE		
	2012	2013
Jan	0.9	0.8
Feb	0.3	0.0
Mar	0.3	0.1
Apr	0.2	0.6
May	0.3	0.6
Jun	0.5	0.7
Jul	0.1	0.5
Aug	1.1	0.5
Sep	0.5	0.5
Oct	1.3	0.1
Nov	1.0	0.8
Dec	1.2	0.6

CCS		
	2012	2013

Jan	1	1.1
Feb	1.1	0.5
Mar	1	0.4
Apr	0.9	0.6
May	0.9	0.5
Jun	0.6	0.6
Jul	0.7	0.6
Aug	0.7	0.4
Sep	0.7	0.5
Oct	1.1	0.7
Nov	1.1	0.8
Dec	0.5	0.5

RHR		
	2012	2013
Jan	1	0.8
Feb	1	0.6
Mar	1	0.6
Apr	0.5	0.5
May	0.8	0.5
Jun	0.6	0.4
Jul	0.7	0.5
Aug	0.7	0.4
Sep	0.6	0.6
Oct	0.9	0.6
Nov	0.5	0.5
Dec	0.2	0.4

WB		
	2012	2013
Jan	1.3	0.9
Feb	1.2	0.6
Mar	1.1	0.3
Apr	0.7	0.6

May	0.8	0.8
Jun	0.8	0.8
Jul	1.1	0.8
Aug	0.9	0.8
Sep	0.5	1.0
Oct	1.1	1.1
Nov	1.2	1.0
Dec	1.1	1.0